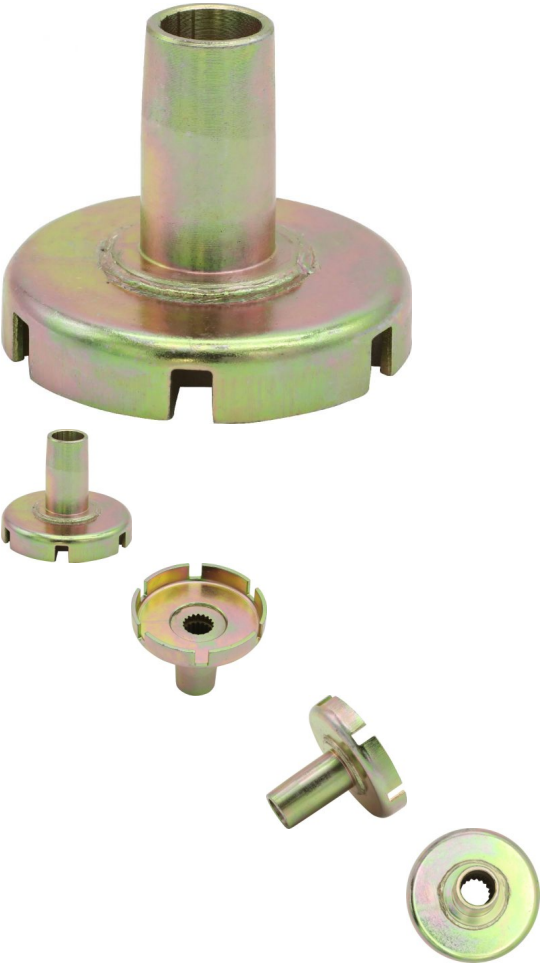


**Boss One-Way Unit - Starter Pawl, 250cc, ATV, Jianshe, Baja - 30A4002 - PBC1725F1**



Rating: Not Rated Yet  
**Price**

\$58.79

[Ask a question about this product](#)

### Description

Boss One-Way Unit / Pullstart Starter Pawl (aka Starter Claw). This is a very common profile and is used for (but not limited to) many big brand and lesser brand name machines from all over the world. Common format for many machines in the 250cc range. Most commonly used for (but not limited to) 250cc ATVs such as the Jianshe JS250 Mountain Lion and Baja Wilderness Trail 250 (WD250-U) ATV as well as many other clones, rebrands and similar displacement machines.

Common Jianshe model name is primarily listed as "Jianshe JS250ATV", "Jianshe 250cc ATV" and "Jianshe 250cc Mountain Lion". Common listed Jianshe JS250 boss one-way unit / pullstart starter pawl part number is FG-807000-0 and listed as "Boss one-way unit" in their parts lists. Also applies to some variations of Jianshe 250cc Go karts, buggies, UTVs and other products.

### Manufacturer Part Number:

- FG-807000-0